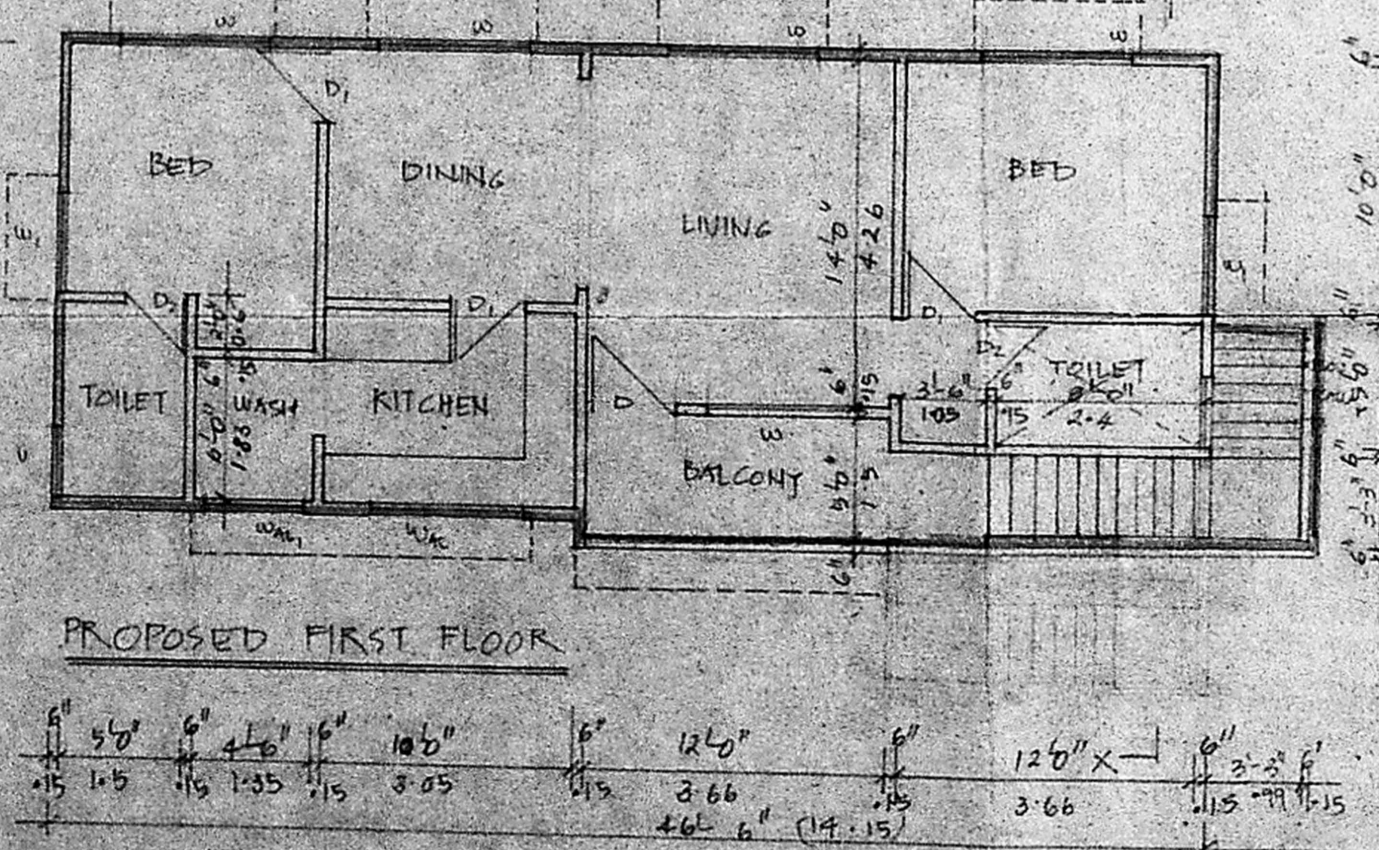
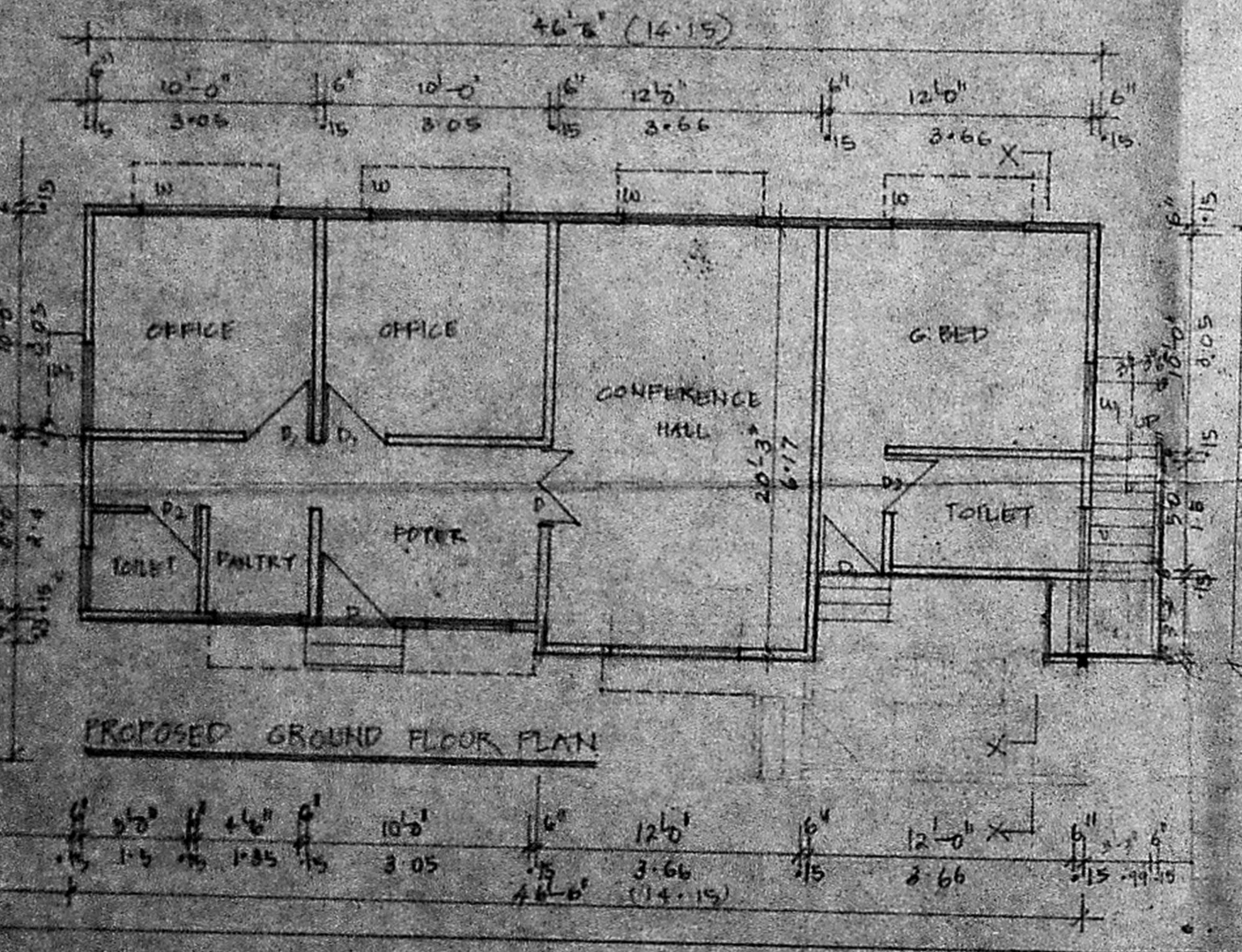
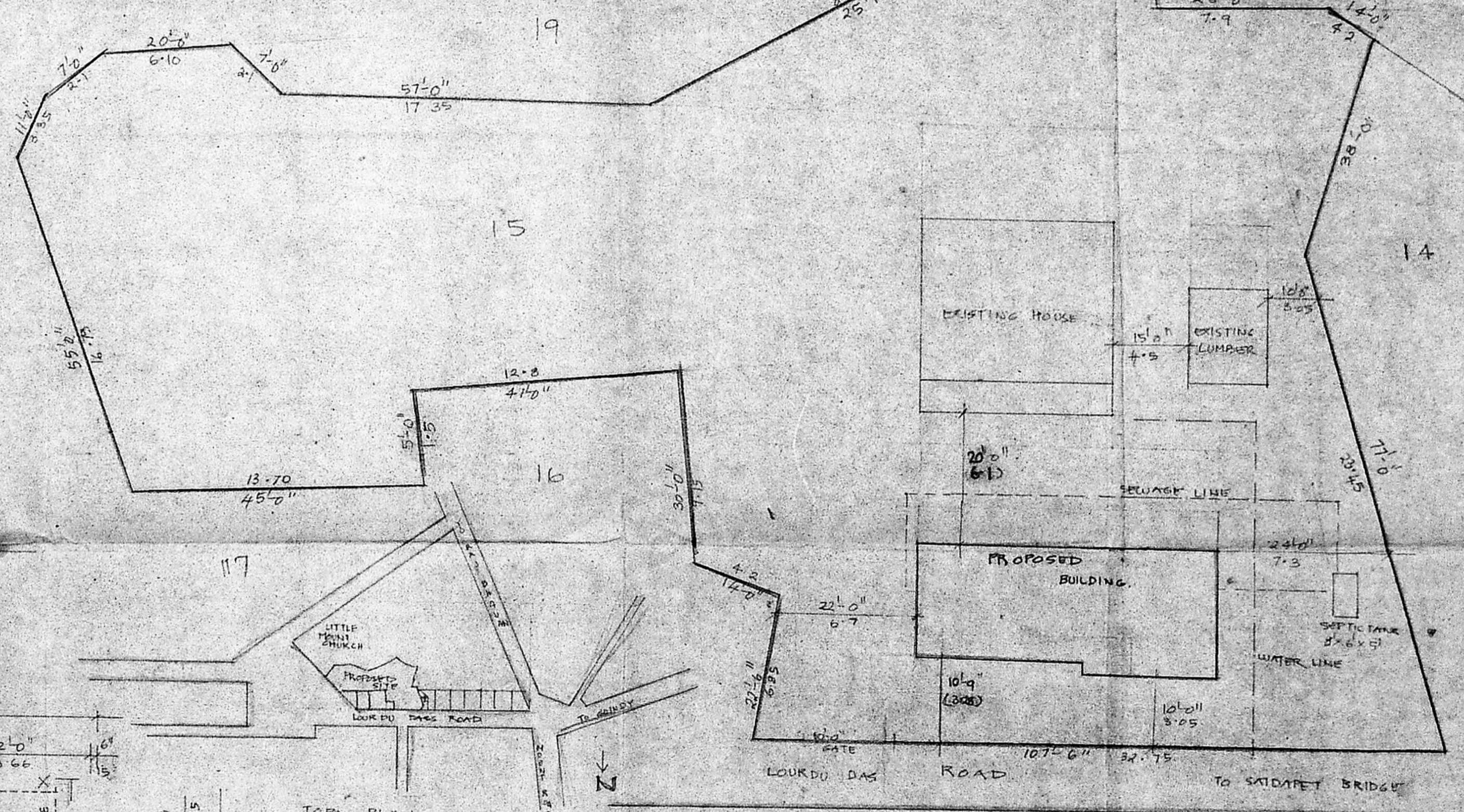
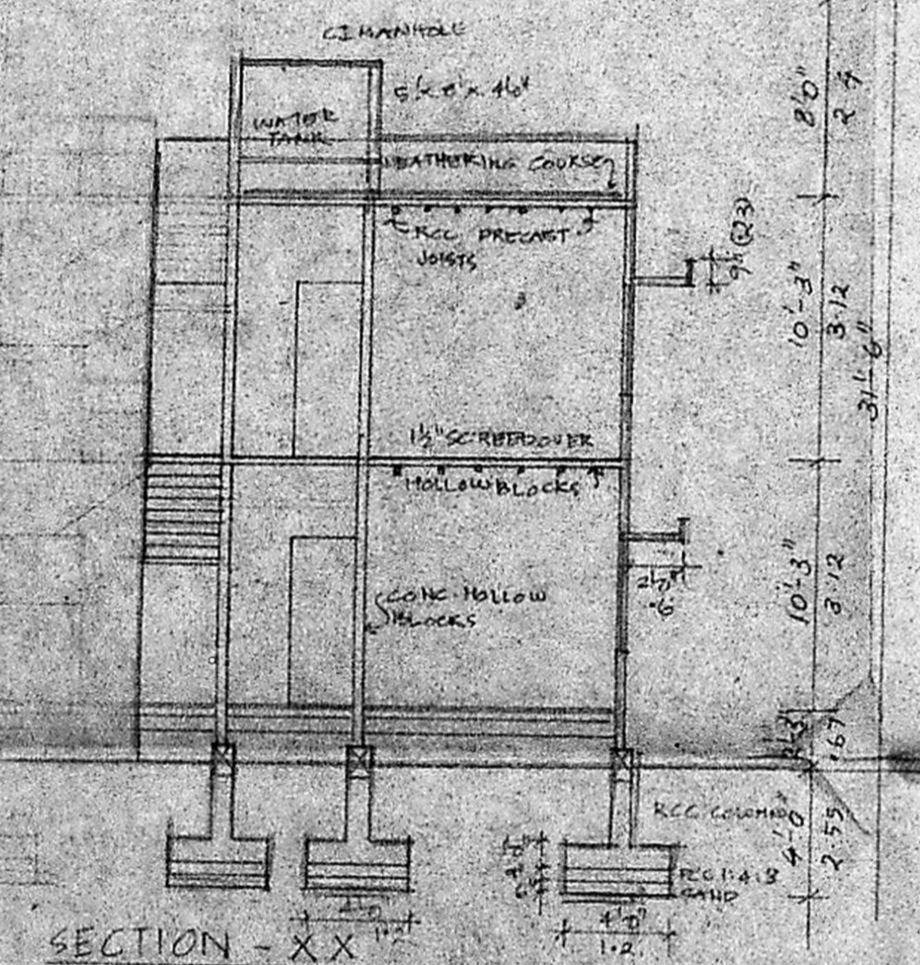
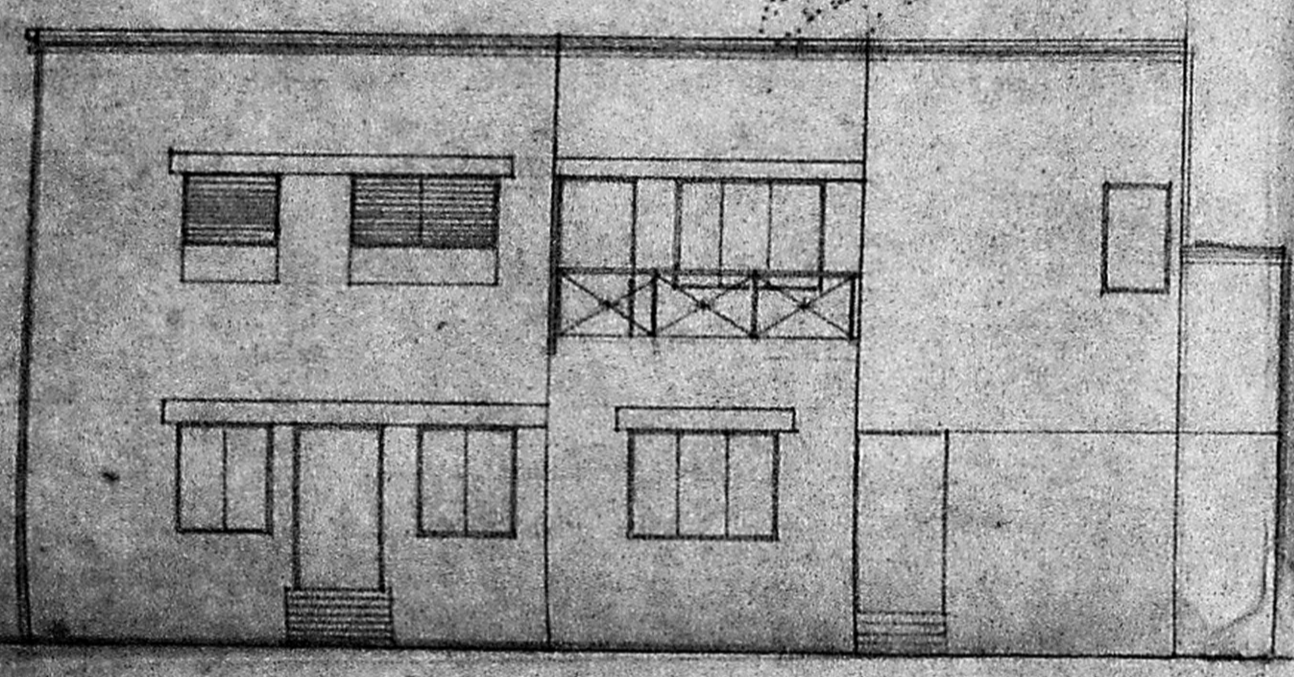
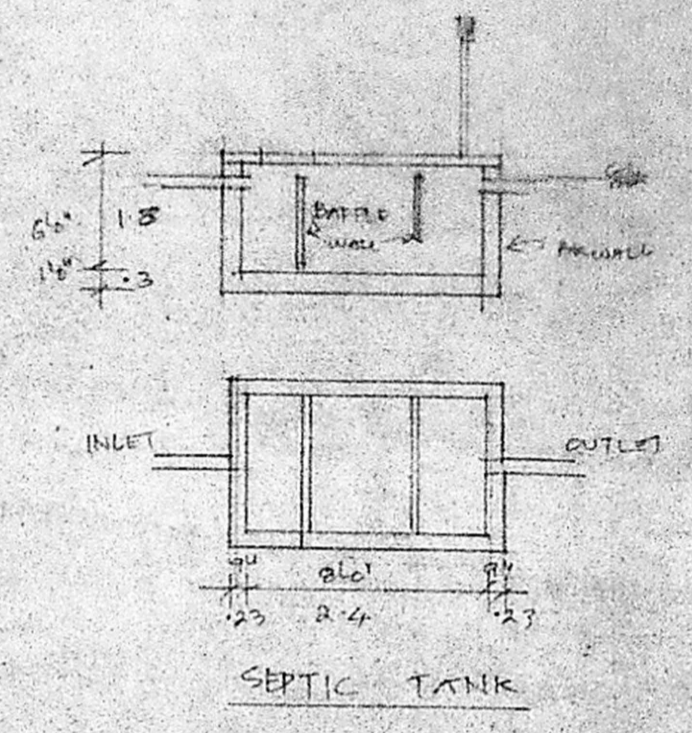
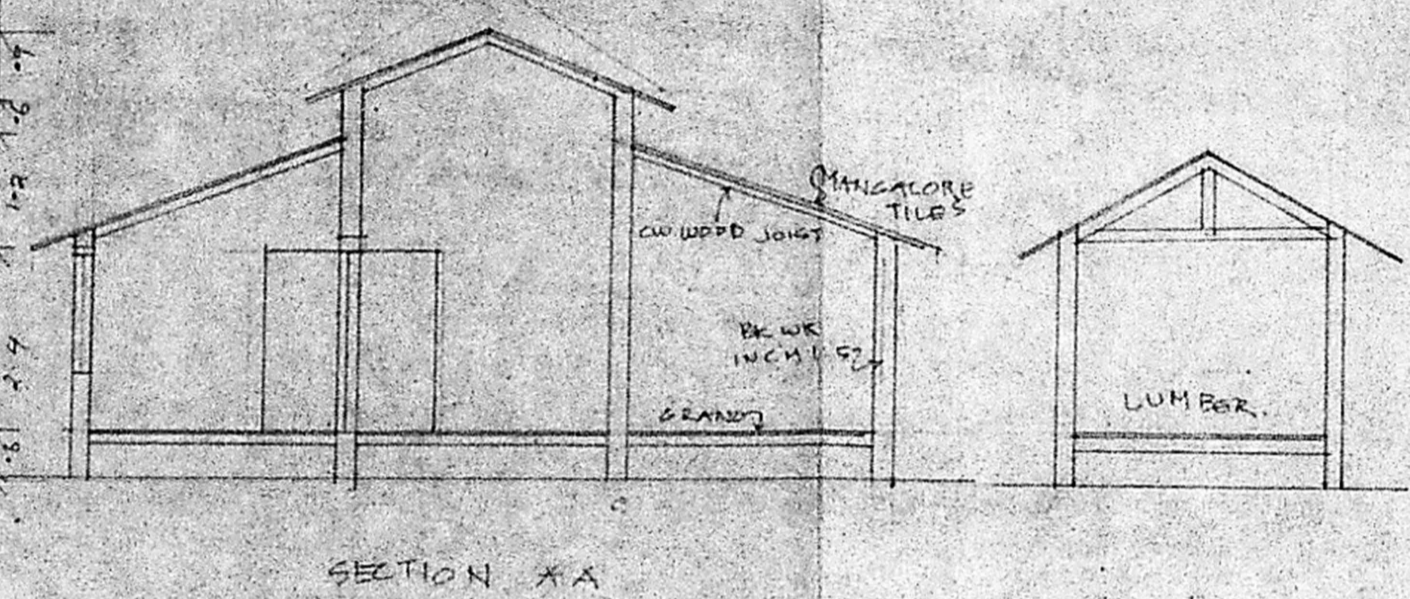
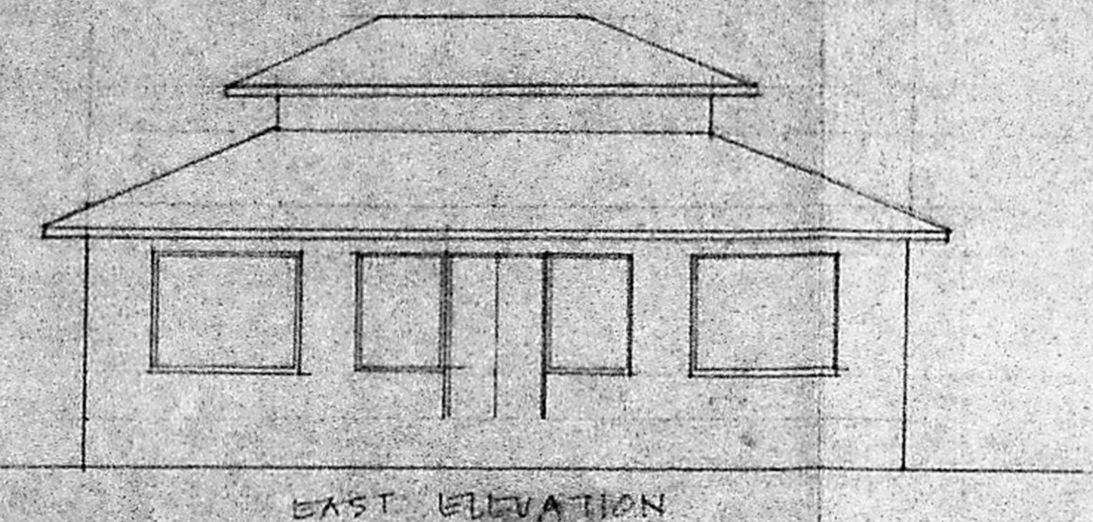
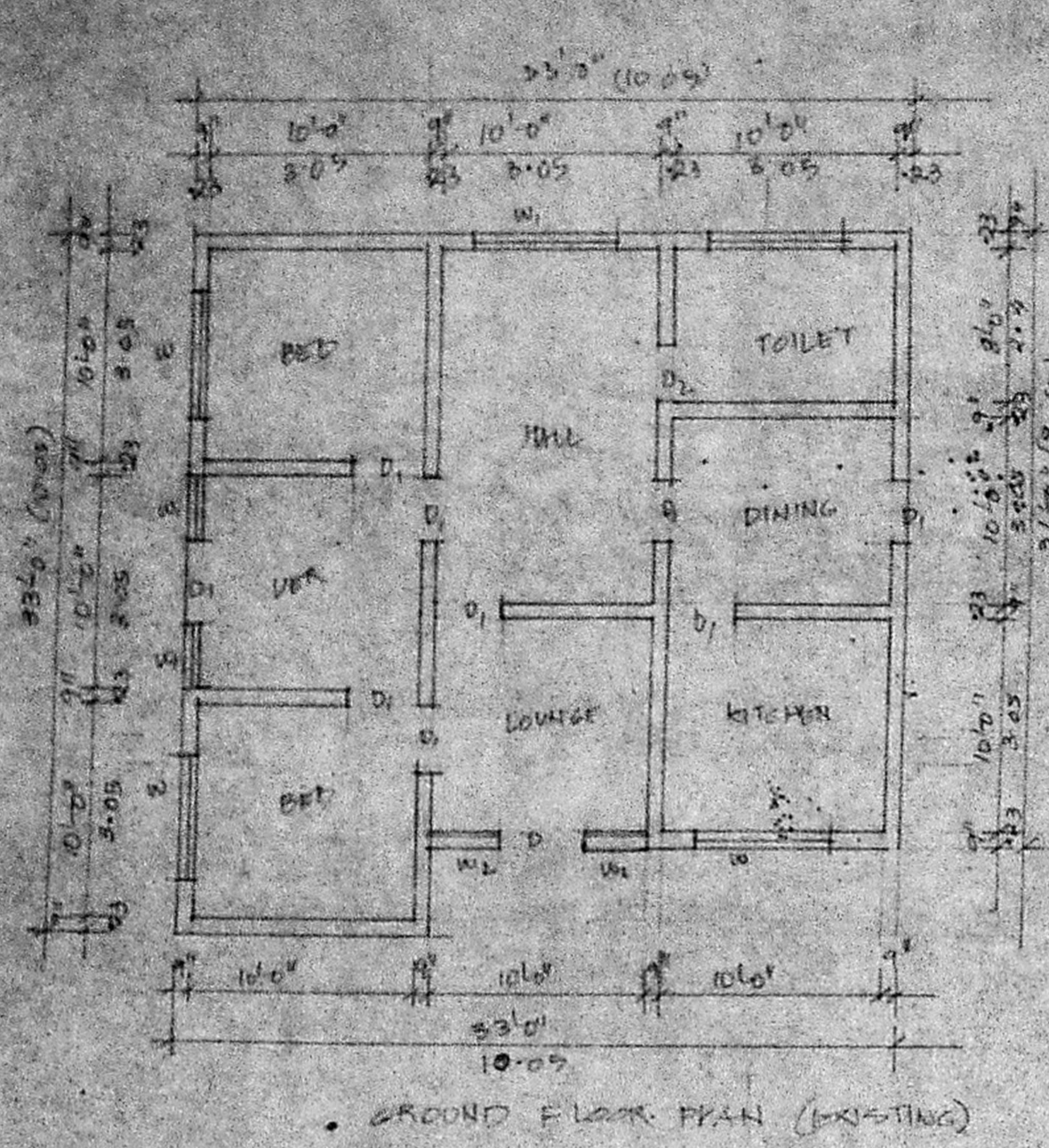


Ok  
 5/11/91  
 7/1

Planning Permit No. C/PP/46/91  
**APPROVED**  
 SUBJECT TO THE CONDITIONS IN  
 THIS OFFICE LETTER  
 No. C4/2323/90 Date 7/3/91  
 FOR MEMBER SECRETARY  
 MADRAS METROPOLITAN  
 DEVELOPMENT AUTHORITY  
 MADRAS - 600 008



PROPOSED OFFICE & GUEST HOUSE  
 FOR CENTRE FOR VOCATIONAL  
 EDUCATION AT PLOT No 10, LOURDU  
 DAS ROAD IS No 15, Block No 3  
 LITTLE MOUNT, SAIDAPET, MADRAS.

- SPECIFICATIONS**
- RCC IN COLUMN FOUNDATION (INCM 112.4)
  - SAND FILLING IN BASEMENT
  - PRECAST HOLLOW CONCRETE BLOCKS IN SUPERSTRUCTURE
  - ROOF IN HOLLOW CONCRETE BLOCK 15CM 1.4 AND 1.1/3
  - RCC SCREED CONC. ON TOP
  - ALL JOINTS OF COUNTRY WOOD
  - 2 COATS OF CEMENT PAINT OVER 1 COAT OF PRIMER FOR WALL
  - 2 COATS OF EMULSION PAINT OVER 1 COAT OF PRIMER FOR WOODWORK
  - PLASTERING IN CM 1:3 FOR CEILING & 1:4 FOR WALLS

SCHEDULE OF JOINERY		
TYPE	SIZE	DESCRIPTION
D	3 1/2" x 7 1/2"	11x215 CW DOOR
D1	3 1/2" x 7 1/2"	10x215 CW DOOR
W	6 1/2" x 5 1/2"	18x15 CW GLAZED WINDOW
W1	6 1/2" x 5 1/2"	18x15 "
W2	6 1/2" x 5 1/2"	18x15 "
W3	6 1/2" x 5 1/2"	18x15 "
W4	6 1/2" x 5 1/2"	18x15 "
W5	6 1/2" x 5 1/2"	18x15 "
W6	6 1/2" x 5 1/2"	18x15 "
W7	6 1/2" x 5 1/2"	18x15 "
W8	6 1/2" x 5 1/2"	18x15 "
W9	6 1/2" x 5 1/2"	18x15 "
W10	6 1/2" x 5 1/2"	18x15 "
W11	6 1/2" x 5 1/2"	18x15 "
W12	6 1/2" x 5 1/2"	18x15 "
W13	6 1/2" x 5 1/2"	18x15 "
W14	6 1/2" x 5 1/2"	18x15 "
W15	6 1/2" x 5 1/2"	18x15 "
W16	6 1/2" x 5 1/2"	18x15 "
W17	6 1/2" x 5 1/2"	18x15 "
W18	6 1/2" x 5 1/2"	18x15 "
W19	6 1/2" x 5 1/2"	18x15 "
W20	6 1/2" x 5 1/2"	18x15 "
W21	6 1/2" x 5 1/2"	18x15 "
W22	6 1/2" x 5 1/2"	18x15 "
W23	6 1/2" x 5 1/2"	18x15 "
W24	6 1/2" x 5 1/2"	18x15 "
W25	6 1/2" x 5 1/2"	18x15 "
W26	6 1/2" x 5 1/2"	18x15 "
W27	6 1/2" x 5 1/2"	18x15 "
W28	6 1/2" x 5 1/2"	18x15 "
W29	6 1/2" x 5 1/2"	18x15 "
W30	6 1/2" x 5 1/2"	18x15 "
W31	6 1/2" x 5 1/2"	18x15 "
W32	6 1/2" x 5 1/2"	18x15 "
W33	6 1/2" x 5 1/2"	18x15 "
W34	6 1/2" x 5 1/2"	18x15 "
W35	6 1/2" x 5 1/2"	18x15 "
W36	6 1/2" x 5 1/2"	18x15 "
W37	6 1/2" x 5 1/2"	18x15 "
W38	6 1/2" x 5 1/2"	18x15 "
W39	6 1/2" x 5 1/2"	18x15 "
W40	6 1/2" x 5 1/2"	18x15 "
W41	6 1/2" x 5 1/2"	18x15 "
W42	6 1/2" x 5 1/2"	18x15 "
W43	6 1/2" x 5 1/2"	18x15 "
W44	6 1/2" x 5 1/2"	18x15 "
W45	6 1/2" x 5 1/2"	18x15 "
W46	6 1/2" x 5 1/2"	18x15 "
W47	6 1/2" x 5 1/2"	18x15 "
W48	6 1/2" x 5 1/2"	18x15 "
W49	6 1/2" x 5 1/2"	18x15 "
W50	6 1/2" x 5 1/2"	18x15 "
W51	6 1/2" x 5 1/2"	18x15 "
W52	6 1/2" x 5 1/2"	18x15 "
W53	6 1/2" x 5 1/2"	18x15 "
W54	6 1/2" x 5 1/2"	18x15 "
W55	6 1/2" x 5 1/2"	18x15 "
W56	6 1/2" x 5 1/2"	18x15 "
W57	6 1/2" x 5 1/2"	18x15 "
W58	6 1/2" x 5 1/2"	18x15 "
W59	6 1/2" x 5 1/2"	18x15 "
W60	6 1/2" x 5 1/2"	18x15 "
W61	6 1/2" x 5 1/2"	18x15 "
W62	6 1/2" x 5 1/2"	18x15 "
W63	6 1/2" x 5 1/2"	18x15 "
W64	6 1/2" x 5 1/2"	18x15 "
W65	6 1/2" x 5 1/2"	18x15 "
W66	6 1/2" x 5 1/2"	18x15 "
W67	6 1/2" x 5 1/2"	18x15 "
W68	6 1/2" x 5 1/2"	18x15 "
W69	6 1/2" x 5 1/2"	18x15 "
W70	6 1/2" x 5 1/2"	18x15 "
W71	6 1/2" x 5 1/2"	18x15 "
W72	6 1/2" x 5 1/2"	18x15 "
W73	6 1/2" x 5 1/2"	18x15 "
W74	6 1/2" x 5 1/2"	18x15 "
W75	6 1/2" x 5 1/2"	18x15 "
W76	6 1/2" x 5 1/2"	18x15 "
W77	6 1/2" x 5 1/2"	18x15 "
W78	6 1/2" x 5 1/2"	18x15 "
W79	6 1/2" x 5 1/2"	18x15 "
W80	6 1/2" x 5 1/2"	18x15 "
W81	6 1/2" x 5 1/2"	18x15 "
W82	6 1/2" x 5 1/2"	18x15 "
W83	6 1/2" x 5 1/2"	18x15 "
W84	6 1/2" x 5 1/2"	18x15 "
W85	6 1/2" x 5 1/2"	18x15 "
W86	6 1/2" x 5 1/2"	18x15 "
W87	6 1/2" x 5 1/2"	18x15 "
W88	6 1/2" x 5 1/2"	18x15 "
W89	6 1/2" x 5 1/2"	18x15 "
W90	6 1/2" x 5 1/2"	18x15 "
W91	6 1/2" x 5 1/2"	18x15 "
W92	6 1/2" x 5 1/2"	18x15 "
W93	6 1/2" x 5 1/2"	18x15 "
W94	6 1/2" x 5 1/2"	18x15 "
W95	6 1/2" x 5 1/2"	18x15 "
W96	6 1/2" x 5 1/2"	18x15 "
W97	6 1/2" x 5 1/2"	18x15 "
W98	6 1/2" x 5 1/2"	18x15 "
W99	6 1/2" x 5 1/2"	18x15 "
W100	6 1/2" x 5 1/2"	18x15 "

*For S. Srinivas*  
 Attorney  
 SIGNATURE OF OWNER

*Gregory Brown*  
 Registered Architect C No. 7073  
 R.A. Works Corp. of Madras  
 ANNA NAGAR, MADRAS - 600 040.

LICENSED BUILDING SURVEYOR  
 AREA  
 EXISTING BLDG - 1397 sq ft  
 PROPOSED " - 2136 sq ft  
 AREA OF PLOT - 3091 sq ft

